

**SCHOOL OF PSYCHOLOGY
FACULTY MEETING**

EVPR OFFICE UPDATE

STEVE CROSS, CHRIS JONES

AUGUST 15, 2017

CREATING THE NEXT®

WHAT WE'D LIKE TO SHARE WITH YOU

- State of Research@Tech
- EVPR Research Strategy
 - Guiding principles
 - Organization
 - Differentiator
- EVPR Focus Areas
 - Federal funding outlook
 - Innovation Neighborhoods and Innovation Centers
 - Interdisciplinary Research Institutes (IRIs)
 - GTRI-RI collaboration
- Q&A followed by reception



GUIDING PRINCIPLES AND STRATEGY

Principles

Promote and support interdisciplinary research that is

- Led by faculty
- Powered by ideas
- Supported by professionals



Strategy

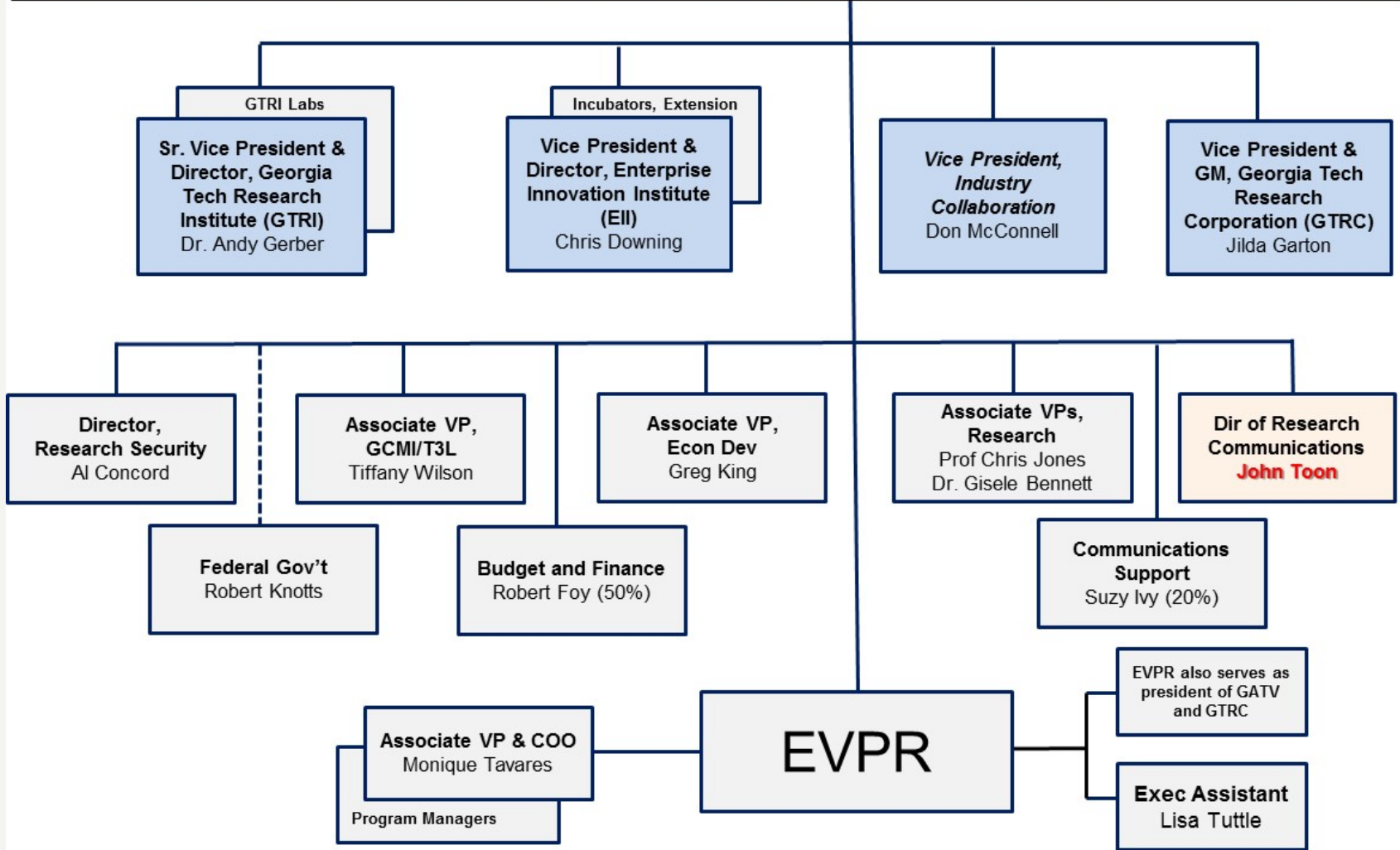
Support faculty to

- Create transformative opportunities
- Strengthen collaborative partnerships
- Enhance economic and societal impact



Also an annually updated ops plan, described in posts issued beginning of semester and on the EVPR web site

Bioeng & Bioscience Data Engr & Science Cyber Security & Privacy Electronics/Nano* Energy Manufacturing*	Bob Goldberg Dana Randall/Srinivas Aluru Wenke Lee/Bo Rotoloni Oliver Brand Tim Lieuwen Ben Wang	<h1>Interdisciplinary Research Institutes</h1> <p>*core equipment facilities</p>	Materials* People & Technology Renewable Bio-products Robotics Sustainability	David McDowell Beth Mynatt Norman Marsolan Magnus Egerstedt John Crittenden
---	---	--	--	--



DISCOVERY TO COMMERCIAL INNOVATION

Increasing Breakthrough Potential

Increasing Technology Maturity

Increasing Commercial Maturity

**Enterprise Innovation Institute &
GT Professional Education**



**Commercialization
& Adoption**

**Georgia Tech
Research Institute**



Applied Research



**Interdisciplinary
Research**

**Interdisciplinary
Research
Institutes**



**Discovery Focused
Disciplinary
Research**

Colleges & Schools

FACILITIES AND ADMINISTRATIVE (F&A) COSTS OR INDIRECT COSTS – *LET'S START CALLING THE RESEARCH OPERATING COSTS*

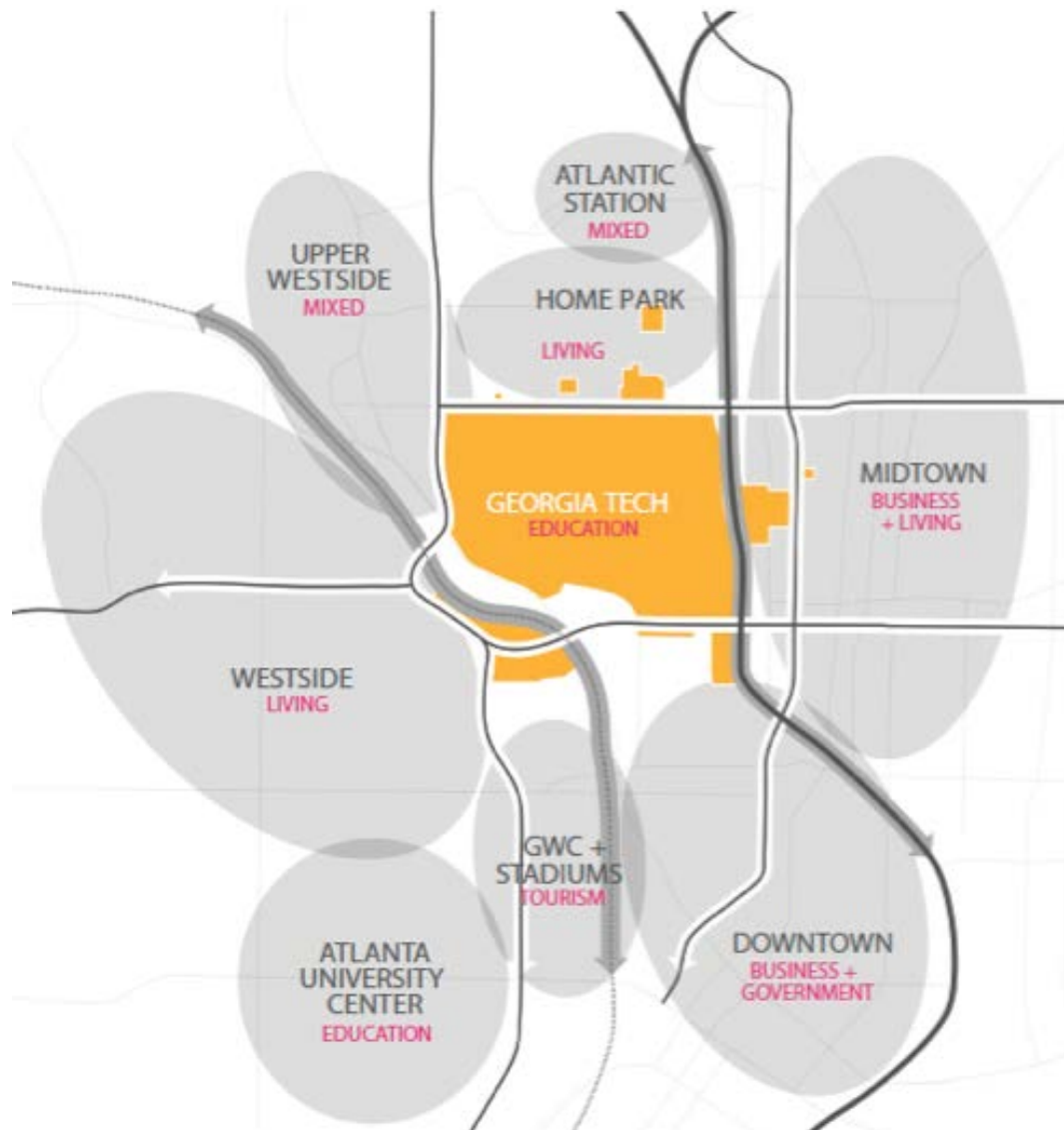
- Real costs supporting research that are paid centrally (e.g., utilities, space, etc.) or by your college (or equivalent unit)
- Audited regularly and approved bi-annually
- Last year the colleges collected \$57M in F&A recoveries, ~3% of the overall GT budget
- DOES NOT COVER FULL COSTS OF SUPPORTING RESEARCH
 - by law, covers >100% of research costs
 - research subsidized by state funds, tuition, gifts
- Much political discourse on this topic of late

See Video: Senator Lamar Alexander (R-Tenn), <https://vimeo.com/222855018/2b1d7ac7da>

EVPR ACTIVITIES SUPPORTING RESEARCH

- Limited Submissions Process
 - Upcoming/active competitions
<https://gatech.infoready4.com/>
 - GTRAC, 20+ nominated faculty, helps review
- Facilitate interdisciplinary interaction as foundation for future collaboration
 - GT-FIRE Mini: up to \$1,250 for a full semester
 - Blue Sky Retreats: self-organized teams gather for extended offsite
- Large Center or Training Grants
 - Proposal preparation seminars, logistical support, team building, etc.
 - 2016 NSF ERC Competition; ~120 pre-proposals, GT has 3/7 final teams
- Ongoing Task Forces – Continuous Improvement
 - Commercialization Task Force
 - IRI 2.0 Task Force

ENHANCING ECONOMIC DEVELOPMENT



Market Focus

Large Companies

Small Companies

Georgia Tech
Signature Technologies

Experiential Learning for
Georgia Tech Students

ENHANCING ECONOMIC DEVELOPMENT: INNOVATION NEIGHBORHOODS

CODA

**Technology
Enterprise
Park / North
Ave. Research
Area**

**14th Street /
Northside**



**Financial Transactions
Health Analytics
Logistics/Supply Chain
Energy
Life Sciences
Biomedicine
Aerospace
Automotive**



QUESTIONS NOW, CONTACT US ANYTIME

Contact us at anytime

Steve Cross

Executive Vice President for
Research

cross@gatech.edu

Chris Jones

Associate Vice President for
Research

cjones@chbe.gatech.edu



<http://www.rh.gatech.edu/subscribe>

BACK UP SLIDES

INTERDISCIPLINARY RESEARCH INSTITUTES (IRIs)

An Interdisciplinary Research Institute (IRI) provides a focal point for Georgia Tech's interdisciplinary research and transition activities in strategic focus areas. It serves as steward for Georgia Tech's **thought leadership role** in this area and as such helps **develop, support, and facilitate interdisciplinary sponsored research** across all Georgia Tech schools and research units, and provides an important, but not exclusive, **gateway for industry collaboration and sponsorship**.

*Core Facility Operators

- **IBB** – *Bioengineering & Bioscience**
- **SEI** – *Energy*
- **IPaT** – *Human – Technology Interfaces*
- **IM** – *Materials**
- **GTMI** – *Manufacturing**
- **IDEaS**– *Data Engineering & Science*
- **IRIM** – *Robotics & Intelligent Machines*
- **IISP** – *Information Security & Privacy*
- **IEN** – *Electronics & Nanotechnology**
- **RBI** – *Renewable Bioproducts*
- **BBISS** – *Sustainable Systems*

Caroline Wood



Don McConnell



Kevin Wozniak

